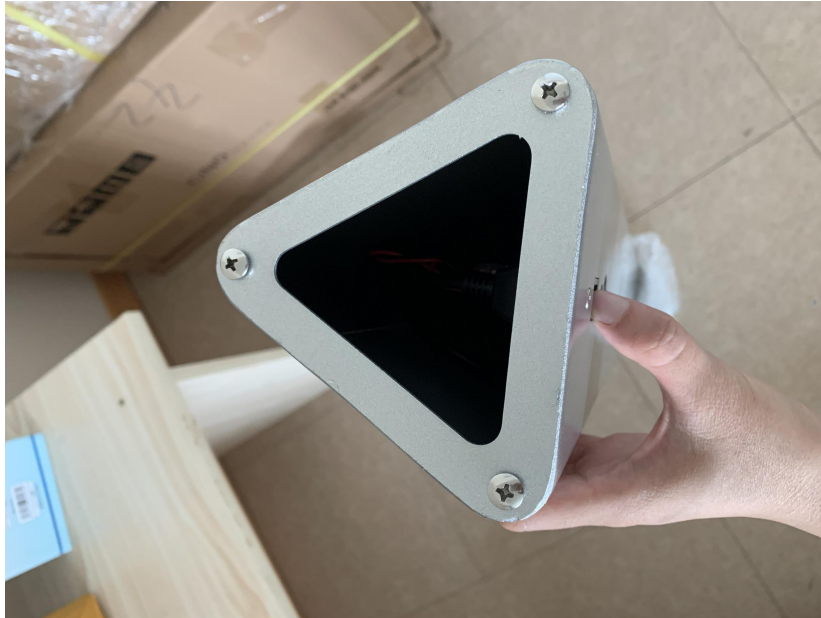


How to Assemble the Floor Stand

1. Using screwdriver to take out the screws.



2. To put the floor stand base to assemble with floor stand.



3. To lock them down.



4. Turn the floor stand around the other side. Using screwdriver to take out the side's screws.

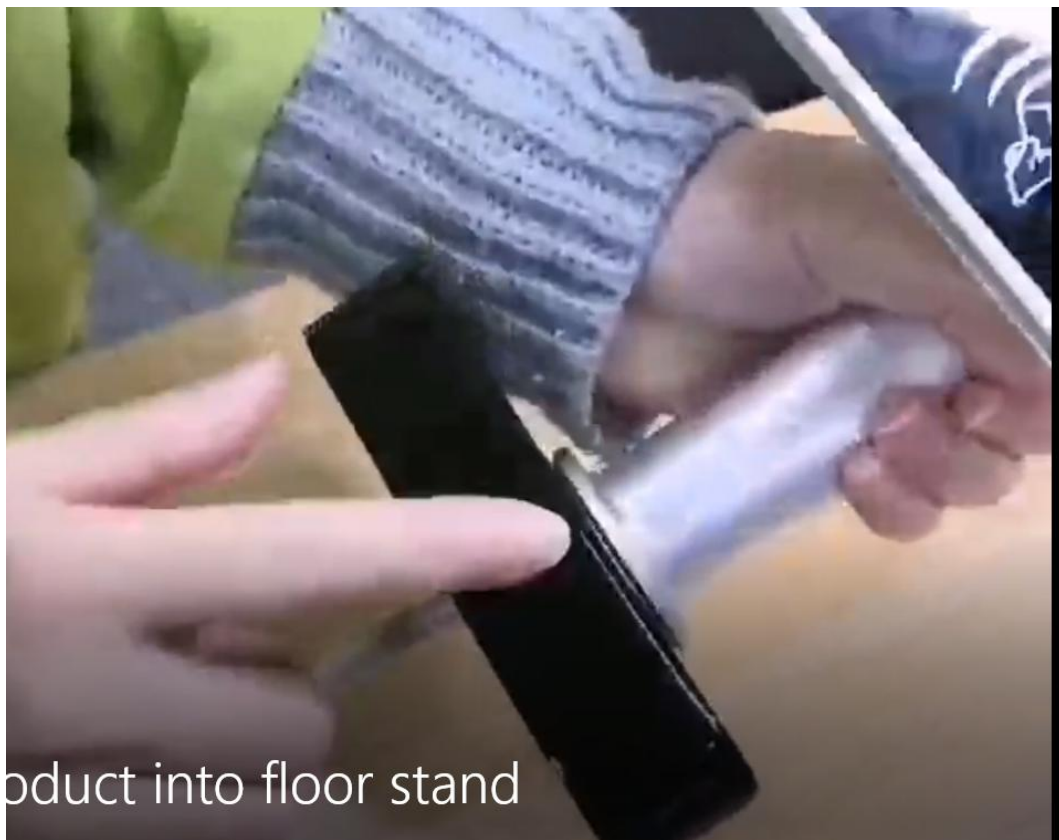


5. Take the floor stand black part separated with the silver part.



6. Put the device's cable through the black part's hole.





product into floor stand

7. Connect the device's cable with the floor stand's internal cable





ct into floor stand

8. Lock the screws again.

